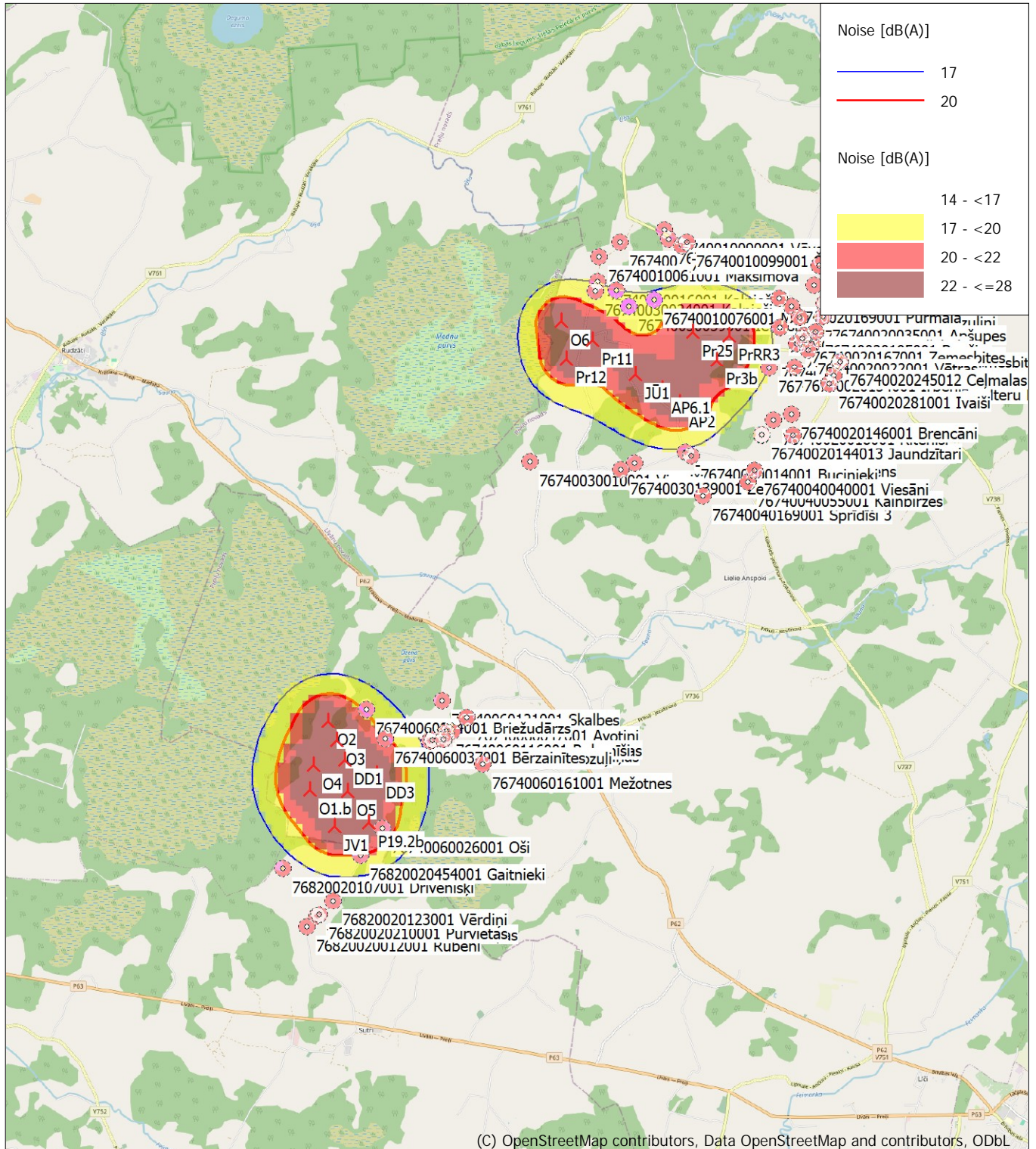


DECIBEL - Map 6.0 m/s Regular dwellings

Calculation: Nordex N175-6.8 MW ST B alternative



(C) OpenStreetMap contributors, Data OpenStreetMap and contributors, ODbL

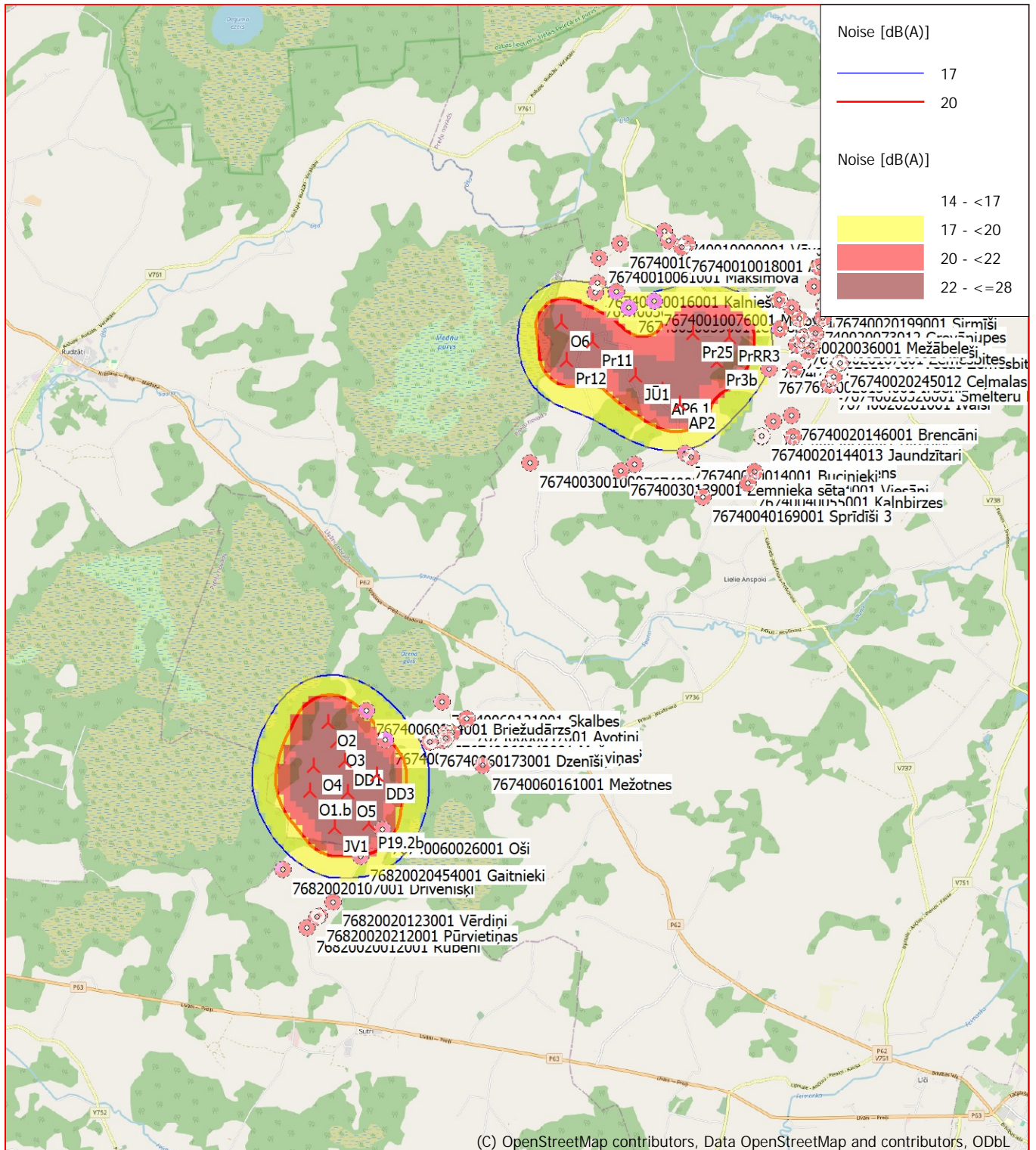
0 1 2 3 4 km

Map: EMD OpenStreetMap, Print scale 1:100,000, Map center Geo WGS84 East: 26.578066° E North: 56.383993° N
New WTG Noise sensitive area
Noise calculation model: Danish low frequency 2019. Wind speed: 6.0 m/s Regular dwellings
Height above sea level from active line object

Nordex N175 B alternative

14/07/2025 5:58 pm/4.0.547

Calculation: Nordex N175-6.8 MW ST B alternative



(C) OpenStreetMap contributors, Data OpenStreetMap and contributors, ODbL

A horizontal number line is shown with tick marks at 0, 1, 2, 3, and 4 km. The line is divided into four equal segments of 1 km each. The segments are colored alternately: the first segment (0 to 1 km) is white, the second (1 to 2 km) is black, the third (2 to 3 km) is white, and the fourth (3 to 4 km) is black.

Map: EMD OpenStreetMap , Print scale 1:100,000, Map center Geo WGS84 East: 26.578066° E North: 56.383993° N

 New WTG

■ Noise sensitive area

Noise calculation model: Danish low frequency 2019. Wind speed: 8.0 m/s Regular dwellings

Height above sea level from active line object